

2020

**LEAD
CONSIDER
CHALLENGE
SUCCEED**

" We all know where we've been over the past few months. Where we are heading is the challenge for us now! Many of us have been on the 'safety first' trail focusing on survival, but that can't continue, we now must plan our way out!

Having said that, we are reminded that our plans need to incorporate lessons learned from the pandemic. We can't abandon the conduct that protected us, or we also would be at risk of experiencing that 'second wave'!

Our focus must return to what we are meant to be doing - which is what we do best. When we say 'We', it means all of us. We have had 'we are all in this together' drummed into us - it is now time for 'we all need to get out of this together' APG can't do it on its own. We need projects to 'do what we do best'. Projects need clients to conceptualise their being and investors to capitalise them. At the other end we all need constructors to bring those projects to reality.

All participants have a duty to do what they do best within the confines of lessons learned, if we are to find our way out and back to normal.

APG has cast aside its short-term focus and is back to business planning our future. Below we parade a few of our projects that have progressed unhindered through the crisis together with a few we are extremely proud to have recently secured. We thank our clients, new and existing, for these opportunities and warn you that in pursuit of the above we will be in touch shortly.

" **Regards, Paul**

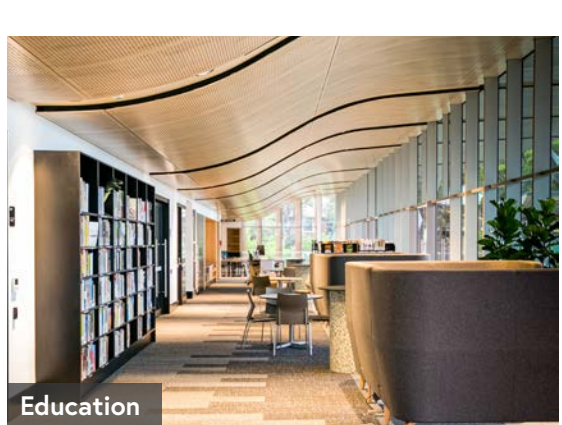
RECENTLY COMPLETED



Retail

**LARGE FORMAT RETAIL,
PORT MACQUARIE**
Client: BWP Trust

APG were engaged to manage a substantial refurbishment of an existing retail asset which now features a new Amart Furniture Superstore along with speciality tenancies.



Education

**GOOLD & LECCETO WING
BUILDING EXTENSION**
Client: St Augustines College

The 4-storey refurbishment and extension of the Goold and Lecetto Buildings includes art rooms, an auditorium, music classrooms, multifunctional spaces, general learning areas and a rooftop library.



Health

SHOALHAVEN DISTRICT MEMORIAL HOSPITAL
Client: Health Infrastructure NSW

APG were appointed as Project Manager to deliver the Shoalhaven District Memorial Hospital multi-storey car park.



Residential

MERINDAH APARTMENTS, GOSFORD
Client: Mann Street Developments

The multi-unit residential development in the heart of Gosford's civic centre features 140 units across 15 floors, with a selection of 1, 2 and 3 bedroom homes, all with extraordinary water views.

CURRENT PROJECTS



Tenancy Delivery

PARRAMATTA SQUARE, NSW
Client: Walker Corporation

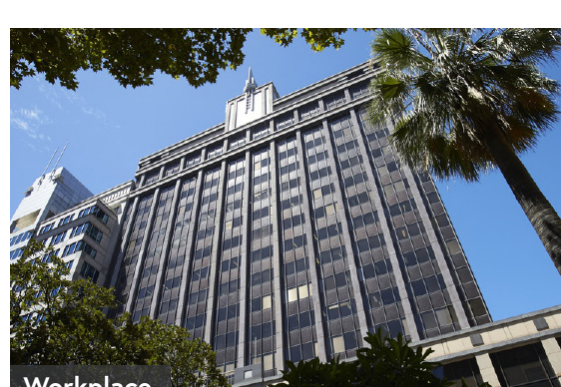
APG have been tasked with the tenancy delivery of the ground floor retail works, featuring large Food and Beverage tenancies and a new lobby Cafe and Restaurant.



Mixed Use

SPRING SQUARE, BANKSTOWN
Client: Poly Australia

APG are working with Poly Australia on the redevelopment of the former Bankstown RSL Club, featuring 516 apartments and retail across four mixed-use buildings.



Workplace

CARRINGTON STREET, SYDNEY
Client: Australian Rail Track Corporation (ARTC)

APG have been appointed as Project Manager for ARTC's new office fit-out at their Sydney Headquarters in Carrington Street, Sydney CBD.



ACP Project Spotlight

MONTPELIER ROAD, BRISBANE
Client: Centuria

APG were appointed to manage the replacement of ACP cladding and signage at Montpelier Road. The project has just completed, on time and within budget. APG continue to work closely with 7 clients across more than 20 ACP projects in 3 states.

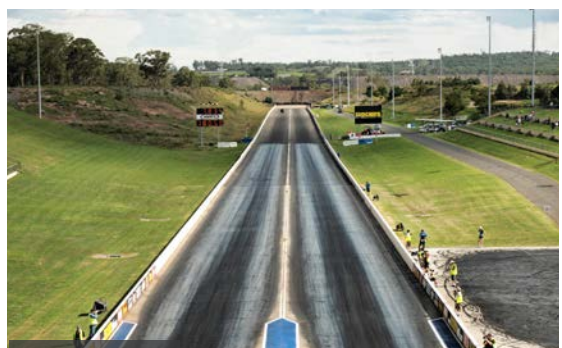
RECENT APPOINTMENTS



Education

MARIST COLLEGE, CANBERRA
Client: Marist College

APG have been appointed by Marist College to assist in implementing the first phase of developing their campus master-plan.



Community

**WESTERN SYDNEY INTERNATIONAL
DRAGWAY, EASTERN CREEK**
Client: Western Sydney Parkland Trust

APG have been appointed as Project Manager for the track upgrades and associated precinct improvements.



Retail

**QUEEN VICTORIA BUILDING &
THE STRAND ARCADE, SYDNEY**
Client: Vicinity Centres

APG have been engaged to manage refurbishment works at the centres which include the balustrade upgrades, across the two heritage assets.

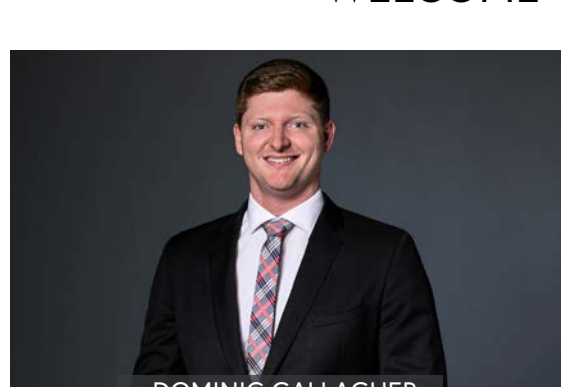


Aged Care

**CALOOLA RESIDENTIAL CARE,
WAGGA WAGGA**
Client: BaptistCare

APG have been engaged to provide project management and superintendency services on the development, taking on the responsibility for coordination of planning, design and delivery phases for a new 80 Bed RACF.

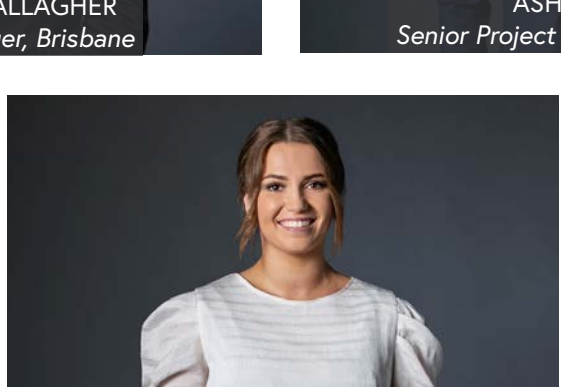
WELCOME TO THE TEAM!



DOMINIC GALLAGHER
Project Manager, Brisbane



ASH WARK
Senior Project Manager, Sydney



CAITLYN JAMIESON
*Business Development & Marketing
Assistant, Sydney*