

APG QUARTERLY PROJECT SHOWREEL AUGUST 2017

In FY17, APG celebrated our first year in the CBD; achieving our business plan; maintaining our strong positions in Retail and Commercial; gaining ground in Aged Care, Education and Residential; and posting our credentials in the public sector for the first time.

We have now settled our plan for FY18, which includes additions to our team, training and educational initiatives, participation in professional groups and industry organisations, and team building exercises. This is aimed at providing you the best people in the market.

Of particular note is our future plans based on the 4 pillars of the business: people, partners, projects and processes, which combine to make the things we do even better. We are constantly

reminded of our purpose to add value and make a difference, and of our vision to lead, consider, challenge and succeed. We work as a team, share as a team through our Friday buunjii sessions and celebrate success as a team.

Finally, our special interest project - the living memorial school in Pozieres, France, achieved two milestones recently with financial support from the NSW Government to allow design to proceed; and advice from Veolia that they will donate adjacent land to be dedicated as a sporting field. We thank all those involved and advise that we are actively seeking sponsorship and support as we prepare for the construction phase. For an overview please listen to the recent Podcast: <http://www.2gb.com/podcast/the-battle-of-pozieres/>.

RETAIL

North Kellyville Square

The rapidly growing community in North West Sydney have a new retail centre with the opening of the North Kellyville Square. APG were there to celebrate the official opening with our client RG Property who have developed the centre anchored by Woolworths, BWS and 17 specialty stores. APG assisted with the pre-acquisition due diligence through to construction delivery & tenancy coordination.



WORKPLACE

KPMG Wollongong

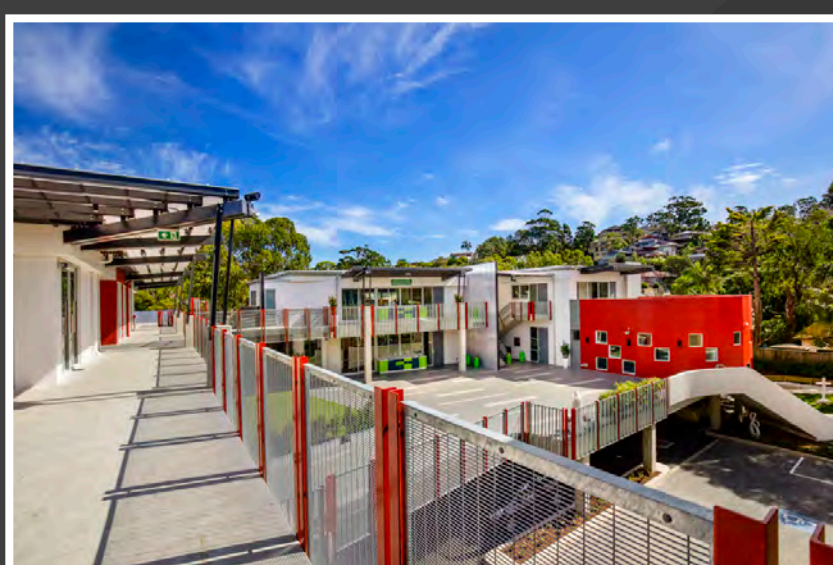
The completion of KPMG's new Wollongong workplace marks the continuing alignment with their Sydney & Melbourne offices with the introduction of activity based working. APG provided strategic leadership of diverse functions, establishment and ownership of the brief, stakeholder engagement, consultant and contractor management, programming and commercial considerations.



EDUCATION

St Augustine's College, Brookvale

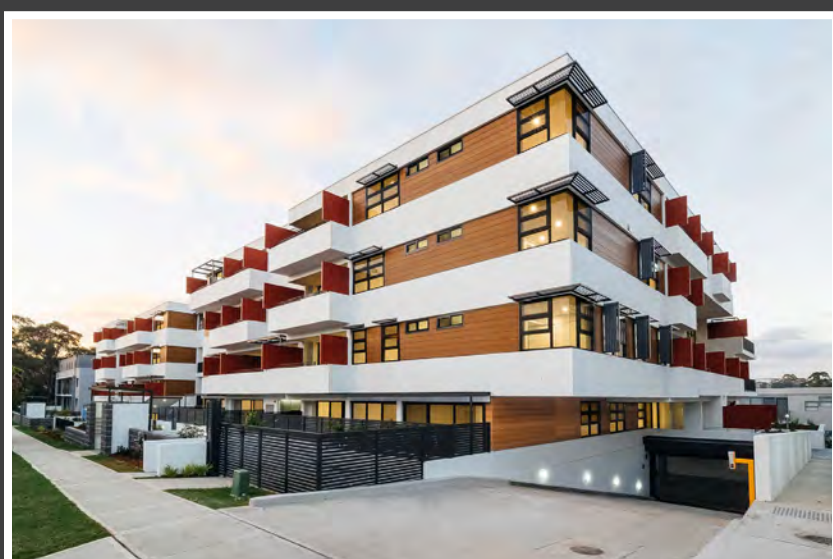
Following the successful completion of Stage 1 building works in 2016 (which included the delivery of the schools brief, also stakeholder engagement and community consultation processes management), APG have been appointed by St Augustine's College at Brookvale to manage the next phase Masterplanning activities.



RESIDENTIAL

North Apartments, Lane Cove

Merging elegant urban living with the natural surroundings, APG have delivered this 68 apartment development that provides a "lifestyle location" in a "liveable and leafy" suburb. APG worked with St Malo to deliver a residential development that is meticulous in detail, quality and design.



IN THE NEWS

PCA's Annual Rugby Lunch

APG were proud to co-sponsor the 2017 Annual Rugby Lunch which supported Beyond Blue. Joined by over 400 property industry representatives, it was a thoroughly enjoyable event moderated by Ross Reynolds with guests Michael Cheika and Emilee Cherry.



[CONTACT US](#)

[ABOUT APG](#)

[SIGN UP / UNSUBSCRIBE](#)



Artazan Property Group Pty Ltd - Copyright © 2017 - All rights reserved
8.1/210 George Street, Sydney NSW 2000
02 8035 5450

